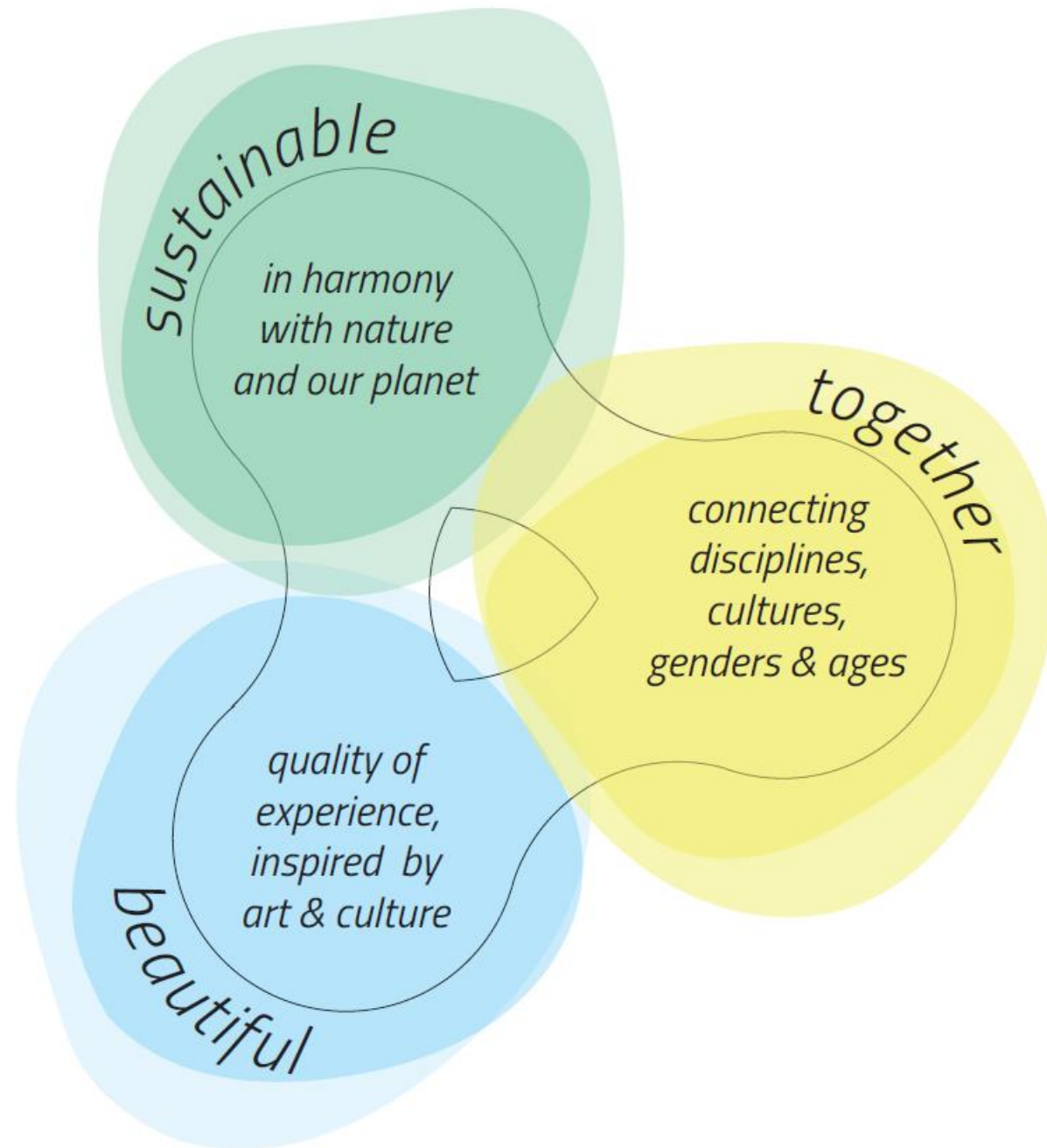


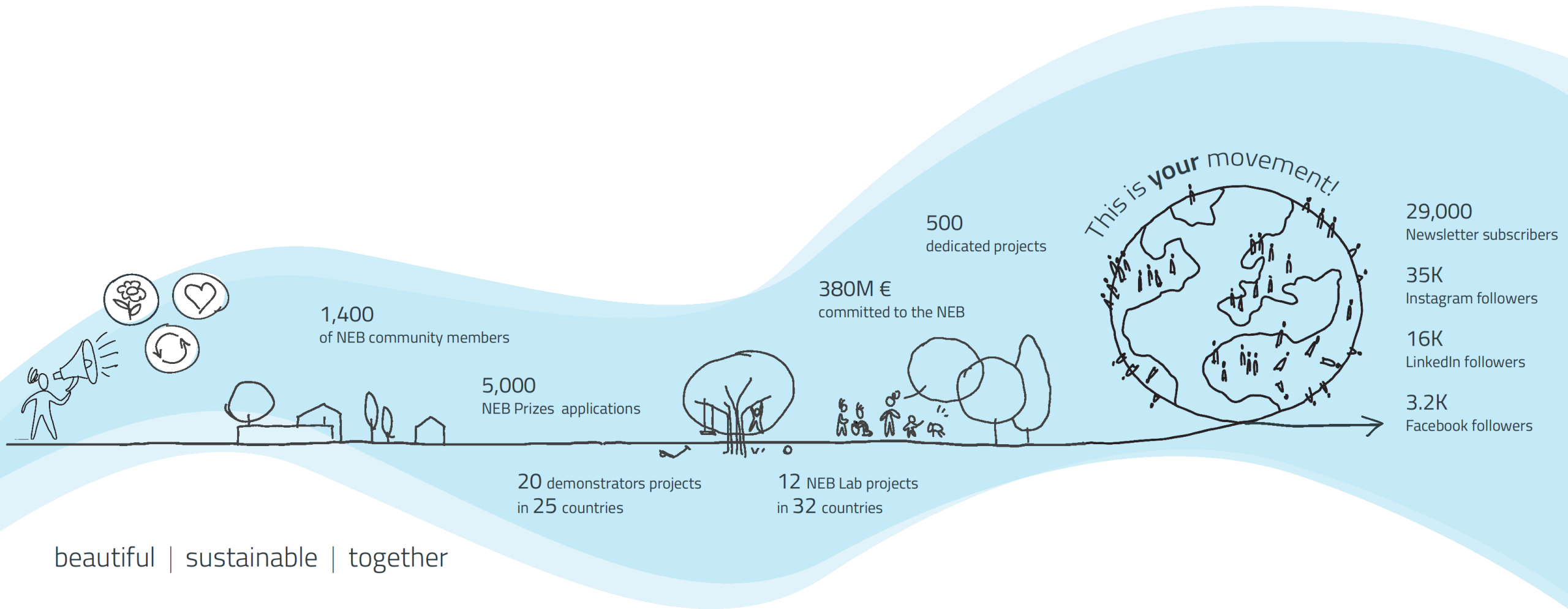
New European Bauhaus Facility

State of play and next steps

Alina UJUPAN

JRC.B4 - New European Bauhaus





beautiful | sustainable | together

New European Bauhaus



Background

- **July 2023:** Commission proposes a sixth Mission on the New European Bauhaus (NEB)
- **September/October 2023:** Member States support the NEB but are concerned about Mission as a tool
- **14 November 2023:** informal workshop with SPC, presentation of the NEB Facility
- **29 November 2023:** Project Group of Commissioners endorsed:
 - The NEB Destination: a transition tool in 2024 (€20 million)
 - The NEB Facility: approx. €120 million / year from 2025-2027 for the R&I component
- **12 December 2023:** Member States welcomed the proposal and its ambition at the SPC meeting
- **20 March 2024:** Adoption of Horizon Europe Strategic Plan 2025-2027



NEB Facility: architecture

R&I component

- **Legal basis:** Article 6(3)(a) of the Council Decision on the Horizon Europe Specific Programme
- **Anchoring:** cross-cluster issue in Chapter 3.1 (on Pillar II) in Horizon Europe Strategic Plan 2025-2027
- **Implementation:** dedicated annex in the 'main' Horizon Europe Work Programmes for the period 2025-2027
- **Indicative budget:** 120 million €/year
- **Three Destinations**



Roll-out component

- **Legal basis:**
 - Horizon Europe Regulation*
 - Article 6(2) and (4) on Strategic planning and implementation and forms of Union funding,
 - article 7(7) on Principles of the Programme
 - Annex IV
 - Common Provisions Regulation*
- **Implementation:** Building on the existing synergies and areas of common interest with EU programmes



NEB Facility: R&I Component

Destination 1: Connecting the green transformation, social inclusion and local democracy

- Reinforcing and rebuilding people's **trust** in democratic institutions, sense of **ownership** and **belonging**
- **Positive narratives and visions** for a common European future
- **Involving citizens** (including vulnerable groups and minorities) in **innovative participatory governance models** to support the design of inclusive and accessible buildings and public spaces

Destination 2: Circular and regenerative approaches for the built environment

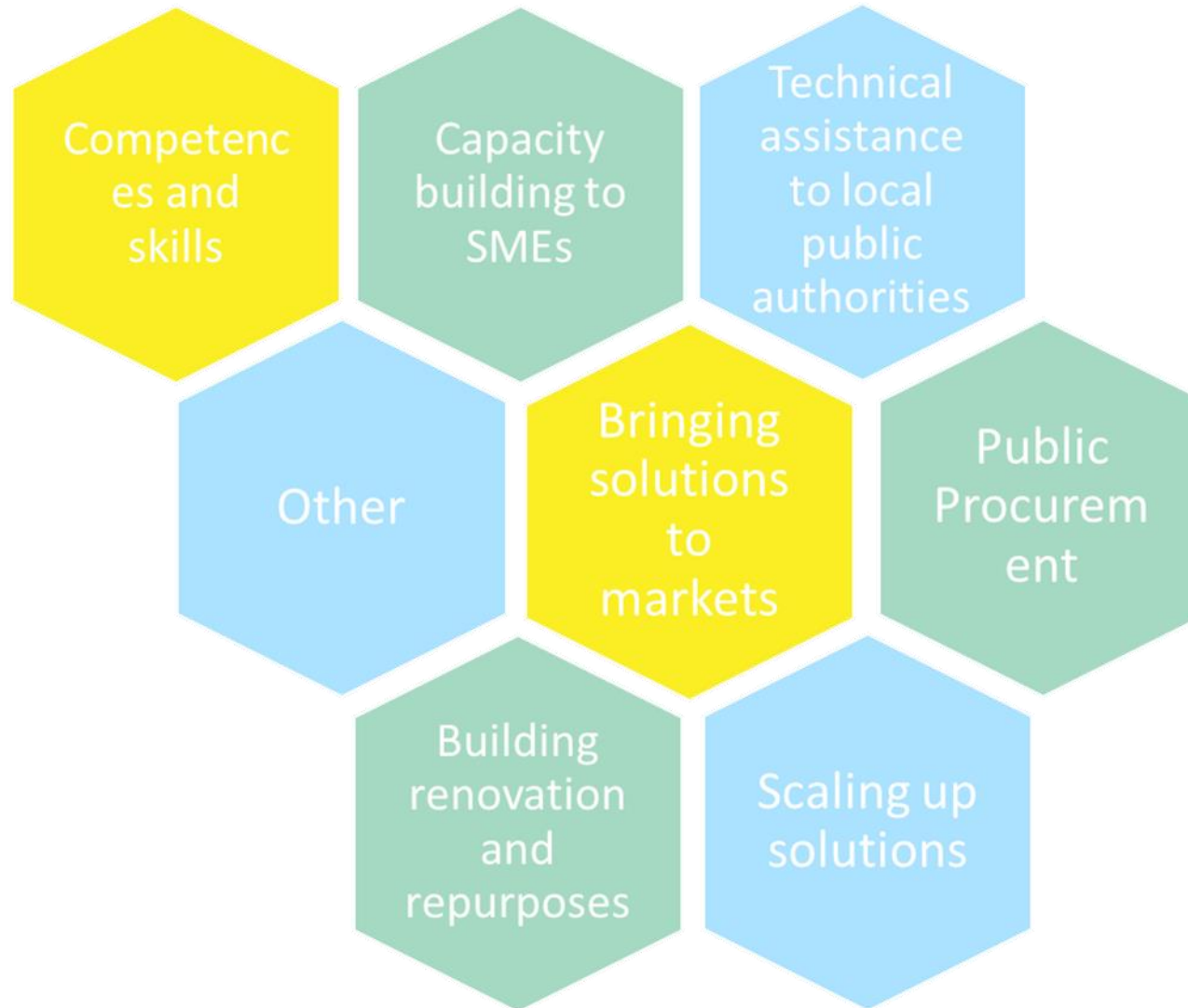
- **Re-use and re-purposing** of materials, building elements, buildings and public spaces
- Turning the built environment into a **carbon sink**
- Applying the concept of **sufficiency** to buildings and architecture to make them **functional, efficient, resilient and effective**, and increase people's **well-being**
- **Regenerative** designs and construction processes
- **User-centred** solutions, connected with **local cultural identity and cultural heritage**

Destination 3: Innovative funding and new business models for the transformation of neighbourhoods

- Better understanding the **market dynamics and how to shift demand and supply**
- New **principles, policies, and frameworks** to encourage and enable new practices in the built environment
- Producing scientific evidence for **new business models and innovative funding**
- Understanding and promoting the **social and economic value of beauty**
- Understanding the **new skills and competences** for a circular, regenerative and inclusive built environment



NEB Facility: Roll-out component



NEB Facility: Consultations

Aim: Make sure that the NEB Facility is built as close as possible to the needs of Member States and stakeholders

Duration

Approx. 6 months

Scope

- R&I and roll-out components of the NEB Facility
- Inputs will feed the Roadmap for the NEB Facility (expected in Autumn 2024)

Format

- On-site and online meetings and workshops
- Questionnaires to gather inputs from
 - SPC delegates
 - New European Bauhaus and Horizon Europe National Contact Points
 - NEB Community
 - Stakeholders





Thank you !